

Johnny B. Goode (concert Bb version)- C instrm.

Chuck Berry

Intro



Deep

Verse

Bb



down in Lou 'si an a, close to New Or leans, 'Way back up in the woods a mong the
 car ry his gu tar in a gun ny sack, Go sit be neath the tree by the
 moth er told him, "some day you will be a man and you will be a lead er of a



ev er greens; There stood an old cab in made of earth and wood, Where
 rail road track; 'Ol en gineer in the train sit tin' in the shade,
 big old band. Man y peo ple com in' from miles a round, to



lived a coun try boy nam ed JOHN NY B. GOODE Who'd nev er ev er learned to read or
 strum min' with the rhy thm that the driv ers made The peo ple pass in' by they would
 hear you play your music till the sun goes down. May be some day your name 'il be in



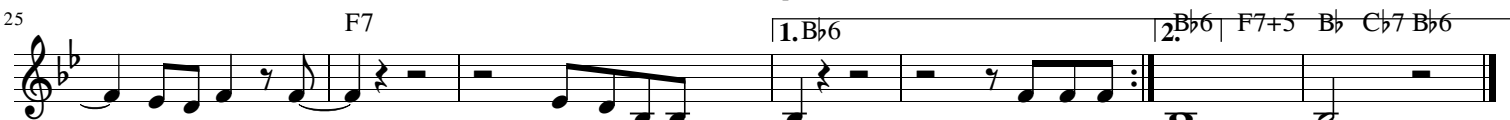
Chorus
Bb6

write so well But he could playGo! a gui tar just like a ring 'ng a bell. Go! Go! Go!
 stop and say, Oh my, but that lit coun try boy could play
 lights A say in' JOHN NY B. GOODE to night"



John ny! Go! Go! John ny! Go! ^{tle} Go! Go! John ny! Go! Go! Go!

Repeat three times



John ny! go! Go! JOHN NY B. GOODE. 2.He used to
 3. . His