

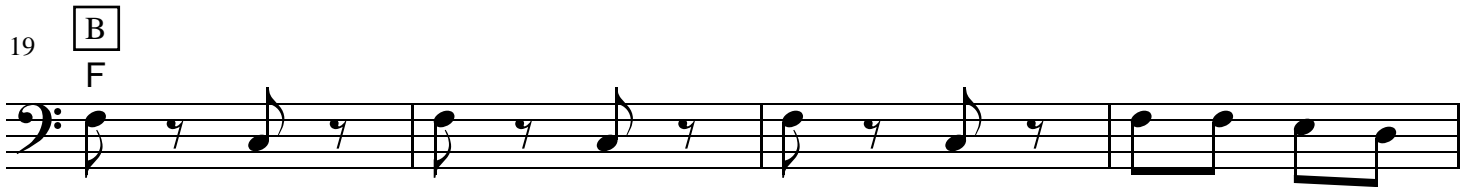
La Misma Canción - tuba

Ozomatli

♩=120

C

A First time through repeat 4x; afterwards only 2x using 3rd & 4th endings



31 C last time to Coda

35 G F

39 C (back to A)

43 \oplus G F

47 C 1. 2.

Arrangement:

AAAA

B

AAB (behind singing)

AAB (behind section solos)

AAB (behind singing)

AA

B to coda